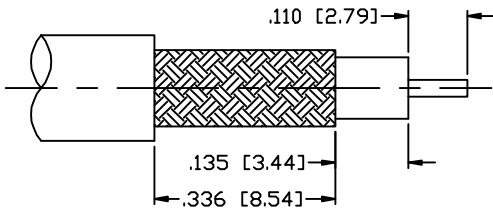


THIS DRAWING CONTAINS INFORMATION PROPRIETARY TO RF INDUSTRIES,  
 ANY UNAUTHORIZED USE OF THIS DRAWING IS EXPRESSLY PROHIBITED  
 WITHOUT WRITTEN PERMISSION FROM RF INDUSTRIES.  
 ANY VIOLATION IS PUNISHABLE UNDER U.S. COPYRIGHT LAWS.

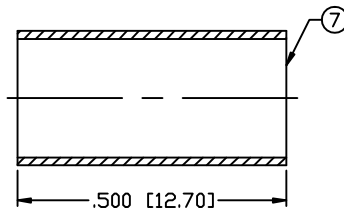
ALL DIMENSIONS ARE REFERENCE ONLY

PART NO.		<b>RQA-5010-C</b>		
REV	DESCRIPTION	DWN	DATE	APPROVED
-	ENGINEERING RELEASE	CZS	12/11/04	JDMc
A	ADD PRESS CAP NOTES	CZS	06/19/07	JDMc
B	ADD STRIPPING INSTRUCTIONS	CZS	04/23/08	JDMc
B1	UPDATED SPECS	CZS	02/21/11	JDMc

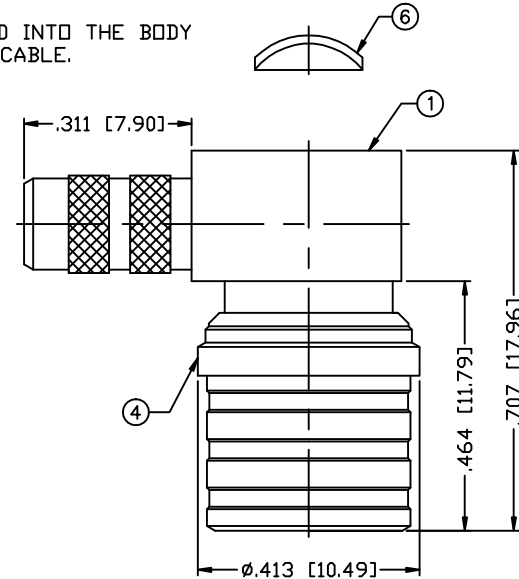
NOTE: PRESS CAP TO BE PRESSED INTO THE BODY CAVITY AFTER ATTACHING CABLE.



RECOMMENDED STRIPPING INSTRUCTIONS



RECOMMENDED CRIMP DIE: .213"



\*\*USE QMA TOOL TO PRESS THE END CAP (ITEM 6) INTO THE BODY TO AVOID DAMAGE TO THE SPRING

RFI PART NUMBER "QMA-TOOL"

NOTE: ATTACH CABLE TO CONNECTOR BY SOLDERING THE CABLE CENTER CONDUCTOR TO THE PIN SLOT INSIDE THE CONNECTOR CAVITY.

**SPECIFICATIONS:**

IMPEDANCE: 50 Ohms  
 FREQUENCY RANGE: 0-6+ GHz  
 INSULATION RESISTANCE: 5k M Ohms min.  
 TEMPERATURE RANGE: -65°C TO 165°C  
 (C) FOR RG-58, 58A, 58C, 141, 141A, BELDEN 8240, 9907  
 8259, 8262, 9201, 9203, 9310, 9311 & COMM/SCOPE 0268  
 (C2) FOR TIMES LMR-200, ALPHA 9848 & MSI-22

1	BODY	1	BRASS	WHITE BRONZE	008974
2	INSULATOR	1	PTFE	---	
3	GROUND RING	1	PHOS BRONZE	WHITE BRONZE	
4	SHELL	1	BRASS	WHITE BRONZE	
5	PIN	1	BRASS	GOLD, 30μ"	
6	PRESS CAP	1	BRASS	WHITE BRONZE	
7	FERRULE	1	BRASS	WHITE BRONZE	
8					
9					
10					
11					
12					
13					
14					

UNLESS OTHERWISE SPECIFIED:  
  
 DIMENSIONS ARE IN INCHES AND [MILLIMETERS]  
 UNLESS OTHERWISE NOTED TOLERANCES ARE:  
 DECIMALS | DIAMETER

7610 MIRAMAR RD  
 SAN DIEGO, CA 92126  
 (858) 549-6340  
 (858) 549-6345 FAX

**RF connectors**  
 DIVISION OF RF INDUSTRIES, LTD.

## QMA PLUG, CRIMP

RIGHT ANGLE

SIZE	CABLE GROUP	DWG NO.	REV
A	C & C2	RQA-5010-C	B1

SCALE: NTS      CAD FILE OUTLINE      SHEET 1 OF 1